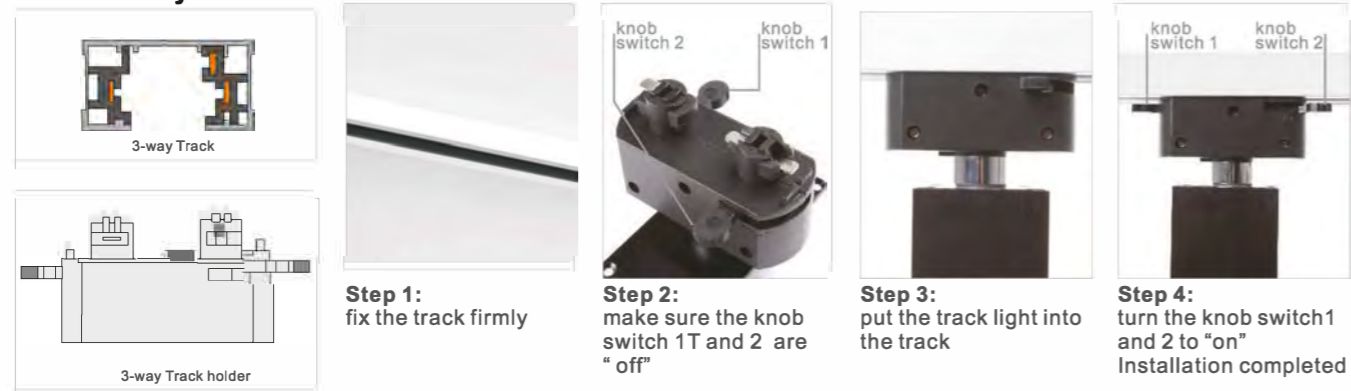


# Technische fiche Pro-line Jupiter Series

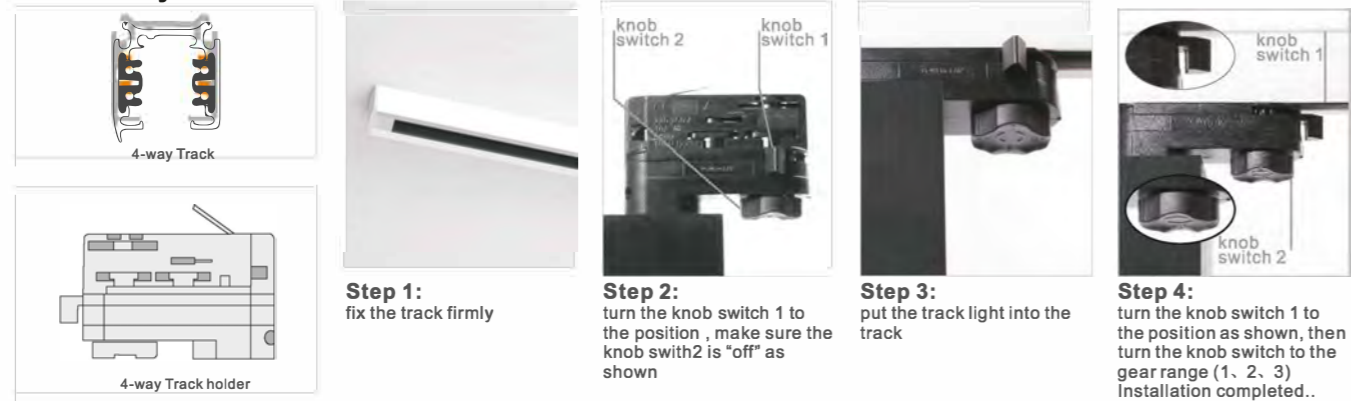
## 1. Two-way Track Light Installation



## 2. Three-way Installation

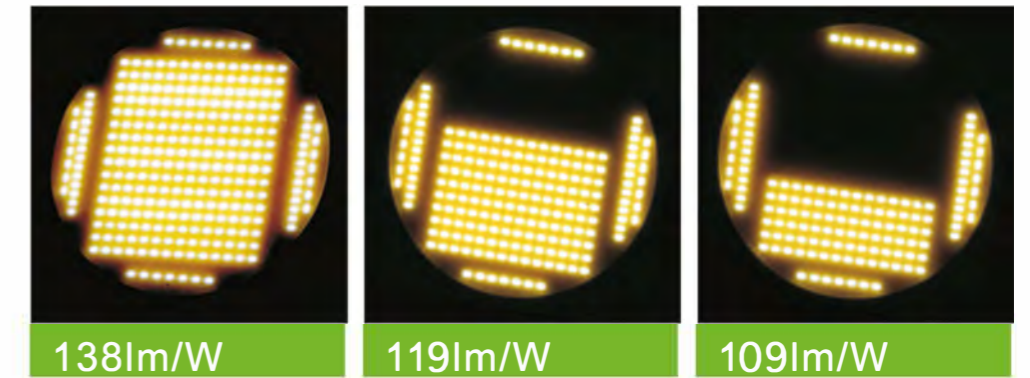


## 3. Four-way Installation



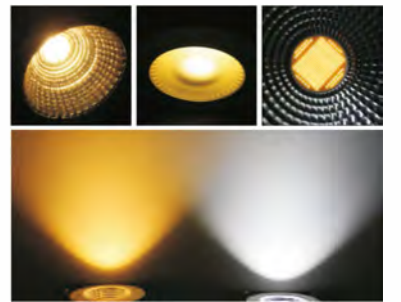
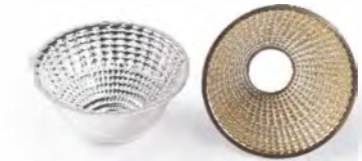
## Ceramic substrate COB light source

The light decay < 25% after working for 30000hrs  
Even if half of the chips don't work, just less than 20% reduction in luminous efficiency

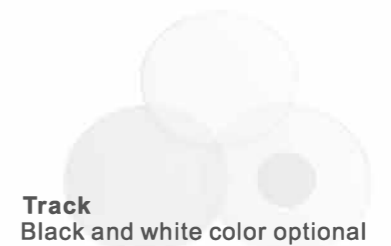


## Pure aluminum reflective cup

Anodizing, anti-corrosiveness and anti-aging, which is different from electroplating plastic cup  
Optional beam angle : 8°/12°/30°/40°/50°



**full tempered glass:**  
even if broken, it will not endanger your safety  
optional glass: clear glass, frosted glass, middle-frosted glass





# Technische fiche Pro-line Jupiter 2\*40W

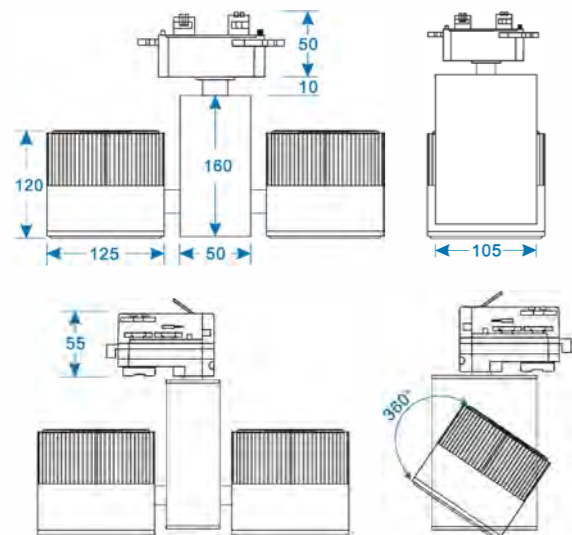
LS-TLJ40T 2\*40W Downlight



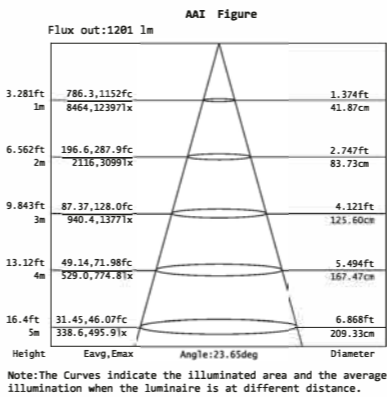
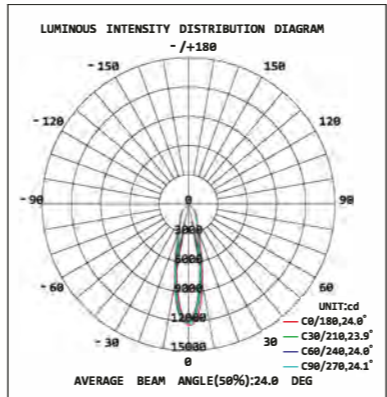
netweight 2.5Kg IP42 V0

Dimensions:

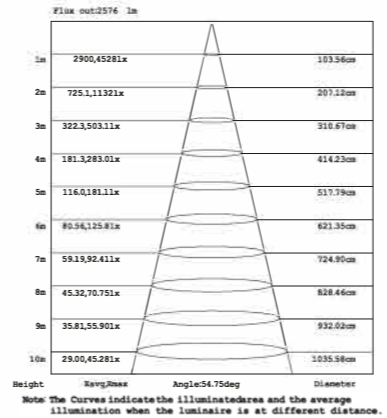
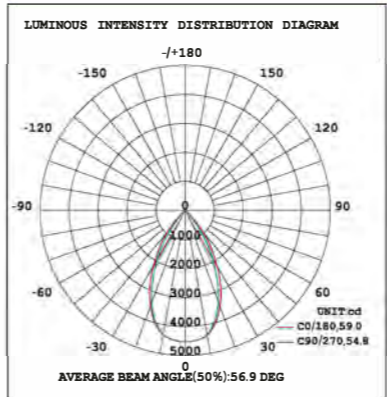
Size:mm



## Graphical Representation for WW30°



## Graphical Representation for NW 50°



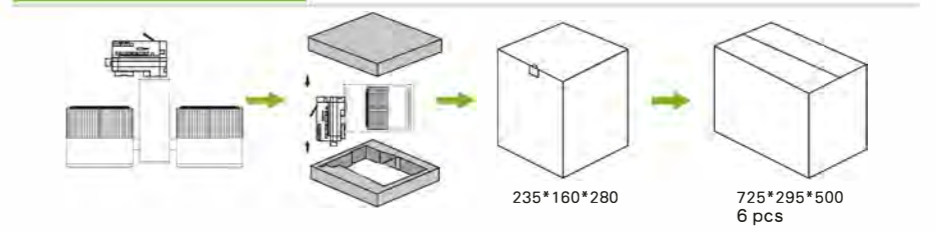
## Product features

LED Power	2*40W
Lamp Consumption	88W
Ra:	>80(max95)
SDCM:	<4
Track Adaptor:	2-way, 3-way, 4-way
Beam Angle:	30° /60°
Input Voltage:	100-277vAC/180-270VAC
Frequency Range:	50-60hz
Working Temperature:	-45°C-45°C
Storage Temperature:	-25°C-65°C
Color of Frame:	white/black/silver
Dimmable Available:	Triac/0-10v/DALI/Wi-Fi
Lifespan:	50000 hrs
Certificate:	CE/RoHS/TUV/SAA/Erp
Warranty:	5years

## Data Sheet

Versions	Part No.	Color	CCT	Output (Ra80)	Output (Ra90)
Super brightness	LS-STL2*40W-W	warm white	2900-3200k	9000-9200lm	7200-7400lm
	LS-STL2*40W-N	natural white	3900-4200k	9200-9400lm	7400-7600lm
	LS-STL2*40W-C	cool white	5900-6200k	9400-9600lm	7600-7800lm
Normal	LS-NTL2*40W-W	warm white	2900-3200k	7800-8000lm	6600-6800lm
	LS-NTL2*40W-N	natural white	3900-4200k	8000-8200lm	6800-7000lm
	LS-NTL2*40W-C	cool white	5900-6200k	8200-8400lm	7000-7200lm
Economical	LS-ETL2*40W-W	warm white	2900-3200k	7200-7400lm	6200-6400lm
	LS-ETL2*40W-N	natural white	3900-4200k	7400-7600lm	6400-6600lm
	LS-ETL2*40W-C	cool white	5900-6200k	7600-7800lm	6600-6800lm

## Packing



## Working Temperature:

