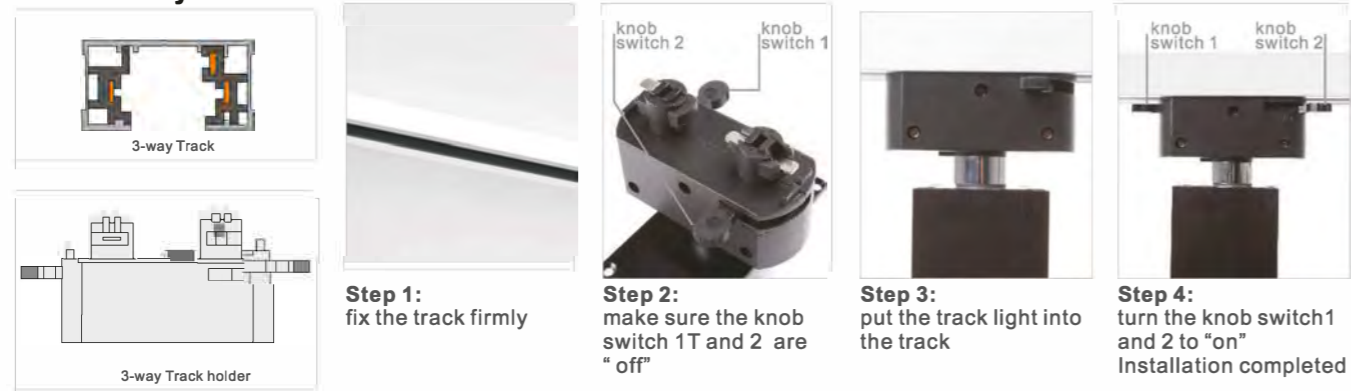


Technische fiche Pro-line Jupiter Series

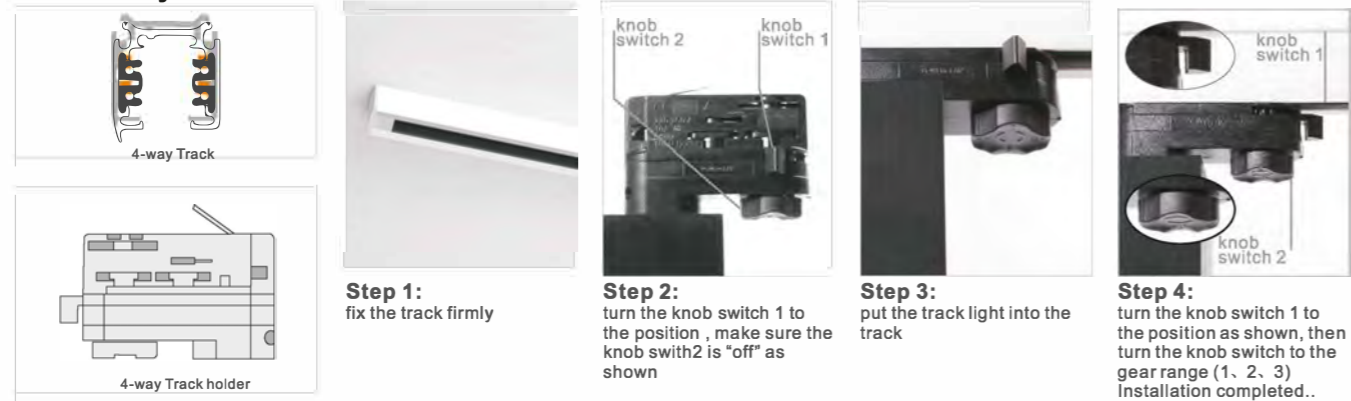
1. Two-way Track Light Installation



2. Three-way Installation

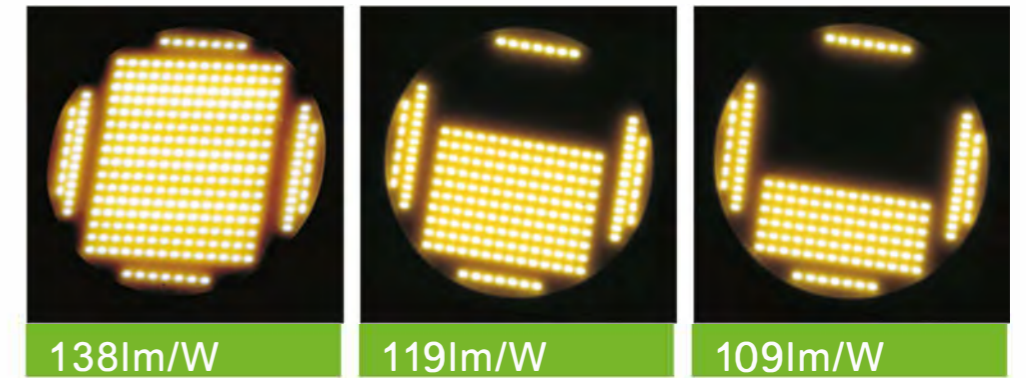


3. Four-way Installation



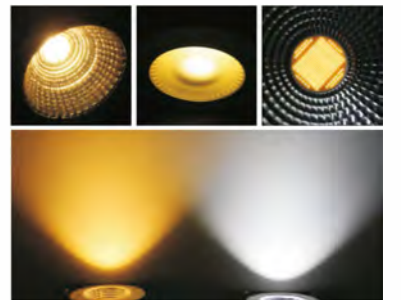
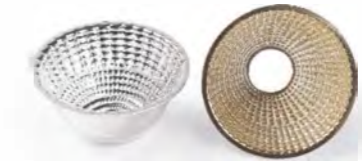
Ceramic substrate COB light source

The light decay < 25% after working for 30000hrs
Even if half of the chips don't work, just less than 20% reduction in luminous efficiency

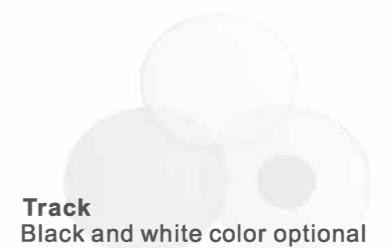


Pure aluminum reflective cup

Anodizing, anti-corrosiveness and anti-aging, which is different from electroplating plastic cup
Optional beam angle : 8°/12°/30°/40°/50°



full tempered glass:
even if broken, it will not endanger your safety
optional glass: clear glass, frosted glass, middle-frosted glass



Technische fiche Pro-line Jupiter 50W

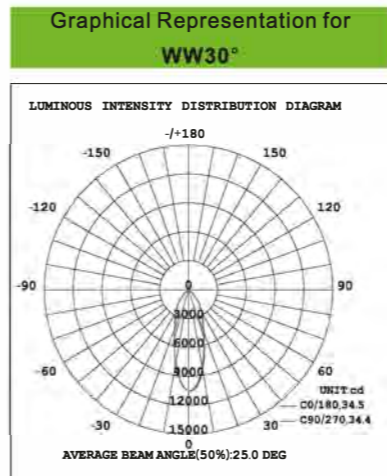
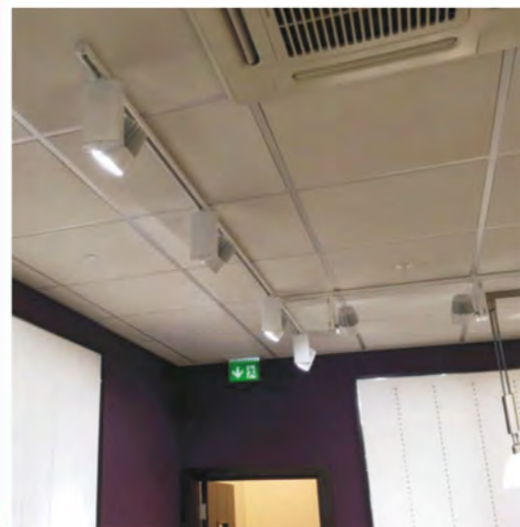
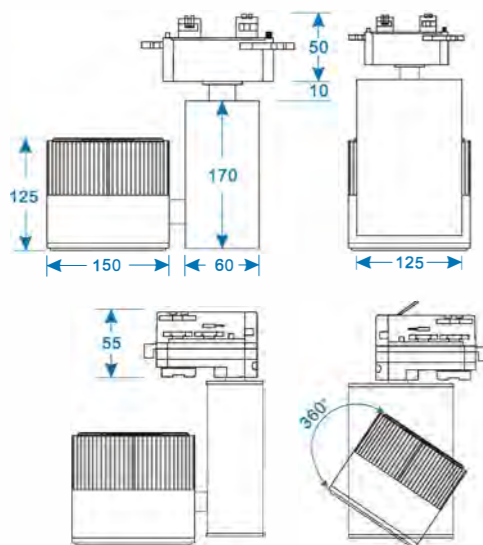
LS-TLJ50 50W Downlight



netweight 2.1Kg IP42 V0

Dimensions:

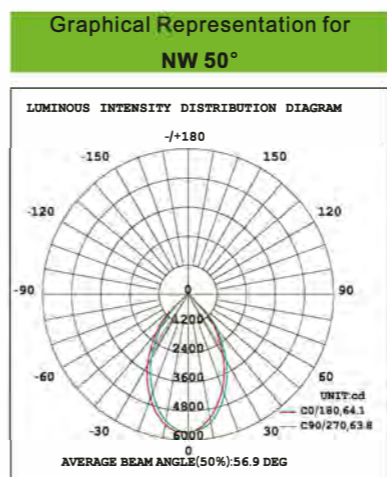
Size:mm



Flux out:2213 lm

Height	BeamMax	Angle:25.36deg	Diameter
1m	6671,105331x		61.83cm
2m	1668,26331x		123.67cm
3m	741,311701x		185.50cm
4m	417,0,658.31x		247.34cm
5m	266,9,421.31x		309.17cm
6m	185,3,292.61x		371.01cm
7m	136,2,215.01x		432.84cm
8m	104,2,164.61x		494.68cm
9m	82,36,130.01x		556.51cm
10m	66,71,105.31x		618.35cm

Note: The Curves indicate the illuminated area and the average illumination when the luminaire is at different distance.



Flux out:3928 lm

Height	BeamMax	Angle:54.75deg	Diameter
1m	3202,56871x		124.18cm
2m	800,414221x		248.37cm
3m	355,8,431.31x		372.55cm
4m	200,1,355.41x		496.74cm
5m	128,1,227.51x		620.92cm
6m	88,94,158.01x		745.11cm
7m	65,34,116.11x		869.29cm
8m	50,03,88.861x		993.48cm
9m	39,53,70.211x		1117.66cm
10m	32,02,54.871x		1241.85cm

Note: The Curves indicate the illuminated area and the average illumination when the luminaire is at different distance.

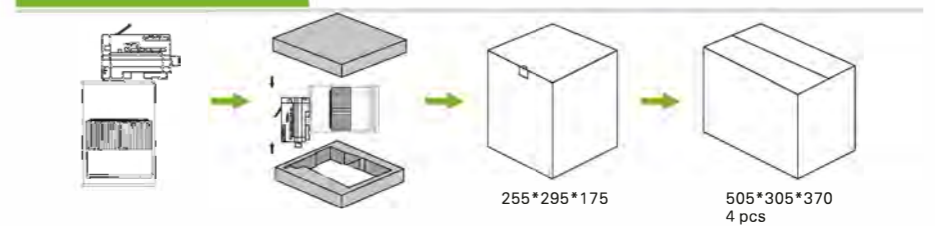
Product features

LED Power	50W
Lamp Consumption	55W
Ra:	>80(max95)
SDCM:	<4
Track Adaptor:	2-way, 3-way, 4-way
Beam Angle:	30° /60°
Input Voltage:	100-277vAC/180-270VAC
Frequency Range:	50-60hz
Working Temperature:	-45°C-45°C
Storage Temperature:	-25°C-65°C
Color of Frame:	white/black/silver
Dimmable Available:	Triac/0-10v/DALI/Wi-Fi
Lifespan:	50000 hrs
Certificate:	CE/RoHS/TÜV/SAA/Erp
Warranty:	5years

Data Sheet

Versions	Part No.	Color	CCT	Output (Ra80)	Output (Ra90)
Super brightness	LS-STL50W-W	warm white	2900-3200k	5400-5500lm	4300-4400lm
	LS-STL50W-N	natural white	3900-4200k	5500-5600lm	4400-4500lm
	LS-STL50W-C	cool white	5900-6200k	5600-5800lm	4500-4600lm
Normal	LS-NTL50W-W	warm white	2900-3200k	4700-4800lm	3900-4000lm
	LS-NTL50W-N	natural white	3900-4200k	4800-4900lm	4000-4100lm
	LS-NTL50W-C	cool white	5900-6200k	4900-5000lm	4100-4200lm
Economical	LS-ETL50W-W	warm white	2900-3200k	4300-4400lm	3700-3800lm
	LS-ETL50W-N	natural white	3900-4200k	4400-4500lm	3800-3900lm
	LS-ETL50W-C	cool white	5900-6200k	4500-4600lm	3900-4000lm

Packing



Working Temperature:

